

HOB Series

Bevel Gearbox

rotork[®]
Gears



Hob Series Hand Operated Bevel Gearbox

Publication RG212E
Issue 10/08

HOB Series

Hand Operated Bevel Gearbox

Description

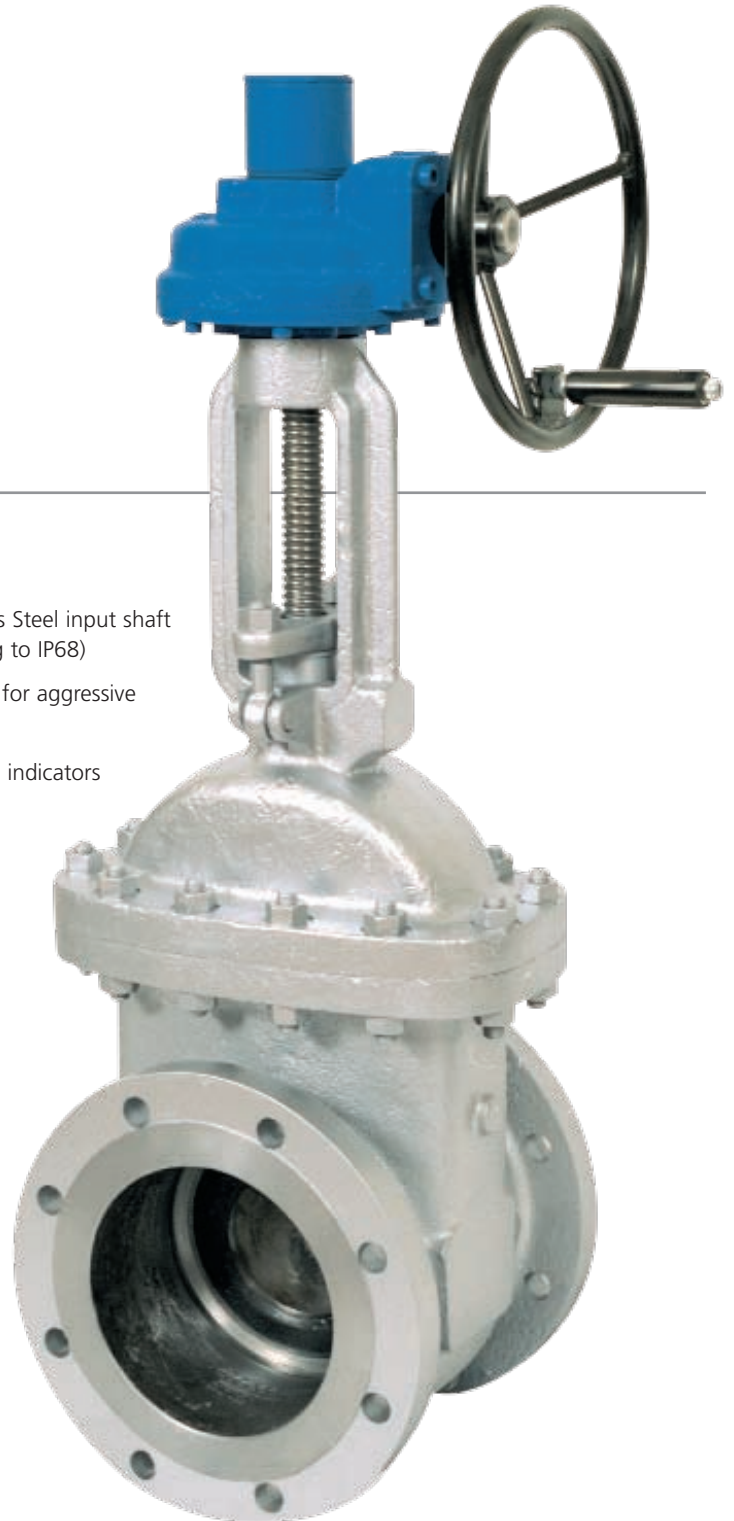
Cost effectively designed for manual applications, the HOB bevel gear operators are for use on gate valves, globe valves and penstocks.

Quality Design

The HOB gear operators are manufactured from high quality materials and life tested ensuring that maximum performance, quality and reliability are consistently maintained.

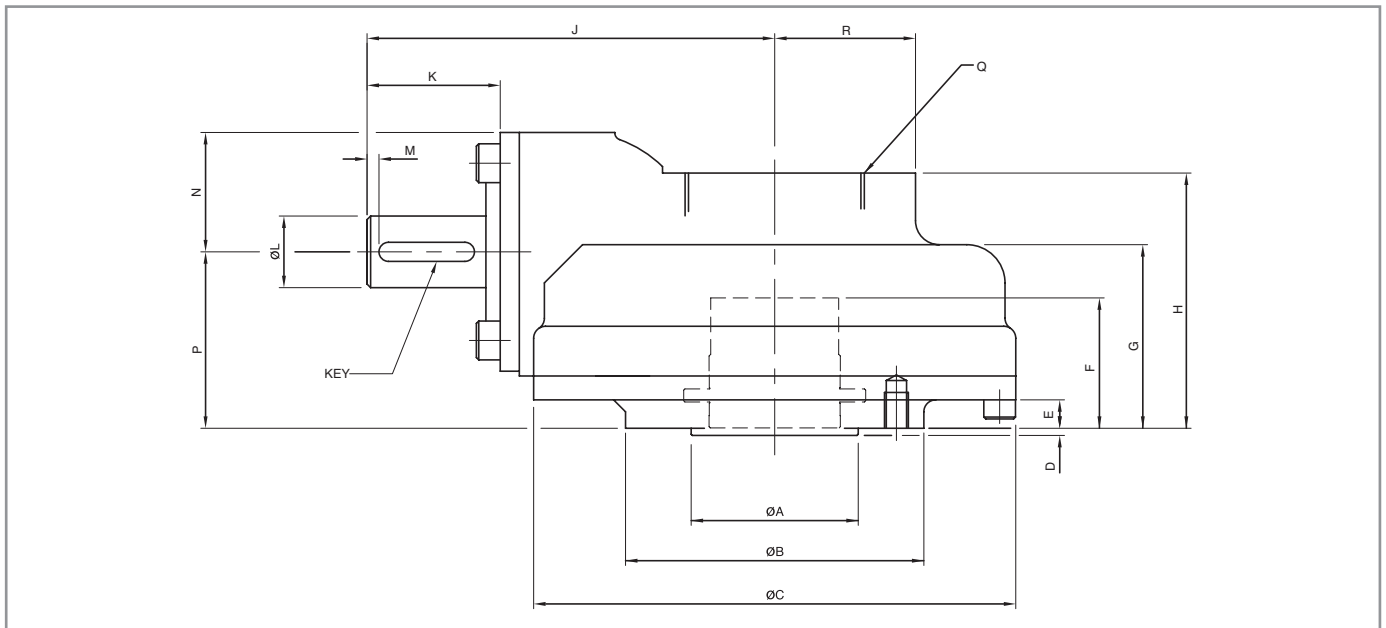
Features

- Carefully chosen ratios to meet manual rim effort requirements
- Totally enclosed gearing
- Cast iron gearcase
- Ductile iron baseplate
- Grease filled for life
- Maintenance free
- Sealed to IP67
- Zinc plated fasteners
- Primed finish
- Optional Stainless Steel input shaft (improved sealing to IP68)
- Optional coating for aggressive environments
- Optional position indicators



Established Leaders in Actuation Technology

Hob Series Hand Operated Bevel Gearbox



Dimensions

Gearbox	HOB210	HOB410	HOB414 F14	HOB414 F16	HOB616
Key	8 mm x 7 mm x 40 mm				
ØB	125mm	125mm	175mm	202mm	210mm
ØC	202mm	202mm	202mm	202mm	260mm
D	3mm	3mm	4mm	5mm	5mm
E	12mm	12mm	35mm	35mm	53mm
F	55mm	55mm	78mm	78mm	97mm
G	77mm	77mm	101mm	101mm	120mm
H	107mm	107mm	130mm	130mm	159mm
R	50mm	50mm	50mm	50mm	62.5mm
J	228mm	228mm	228mm	228mm	251mm
K	113mm	113mm	113mm	113mm	113mm
ØL	30mm	30mm	30mm	30mm	30mm
M	5mm	5mm	5mm	5mm	5mm
N	50mm	50mm	50mm	50mm	50mm
P	74mm	74mm	97mm	97mm	120mm
Q	2.5" BSP				3.5" BSP

Material Specification

Description	Material	ISO Standard
Gearcase & End Cap	Cast Iron	BS EN 1561 EN-GJL-250
Baseplate	Ductile Iron	BS EN 1563 EN-GJS-450-10
Output Gear	Ductile Iron	BS EN 1563 EN-GJS-700-2
Input Gear	Steel	BS 970 605M36T
Drive Sleeve A1	Steel	BS 970 070M20
Drive Sleeve A2	Aluminium Bronze	BS 1400 AB2
Fixing Screws	HT Steel Metric	BS 3693
O Ring Seals	Nitrile	
Thrust Bearings	Needle Roller Bearings	
Grease	Renolit CL-X2	

Baseplate details

Type	ISO 5211	ØA (mm)	Hole Details (45° Off Centres)
HOB210/410	F10	Ø 69.95-0.05	4 x M10 x 15 DEEP ON Ø 102.0 PC
HOB414	F14	Ø 99.95-0.05	4 x M16 x 20 DEEP ON Ø 140.0 PC
	F16	Ø 129.95-0.05	4 x M20 x 25 DEEP ON Ø 165.0 PC
HOB616	F16	Ø 129.95-0.05	4 x M20 x 25 DEEP ON Ø 165.0 PC

Performance Specification

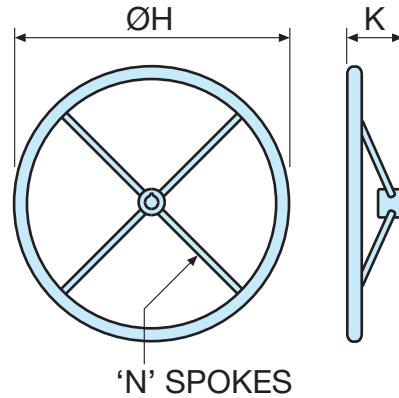
Type	Ratio	Output Torque (Nm)	Mechanical Advantage	Thrust (KN)	Stem Acc. (mm) Keyed / Screwed		Temp. Range (°C)	Output Flange	Weight (kg)
HOB210	2:1	450	1.7	54	40	45	-40 to +120	F10	13
HOB410	4:1	700	3	54	40	45	-40 to +120	F10	13
HOB414	4:1	700	3	178	52	55	-40 to +120	F14	17
								F16	24
HOB616	6:1	1355	5.1	356	68	73	-40 to +120	F16	35

All dimensions in millimetres. Note: Mechanical advantage figures given are +/- 5%

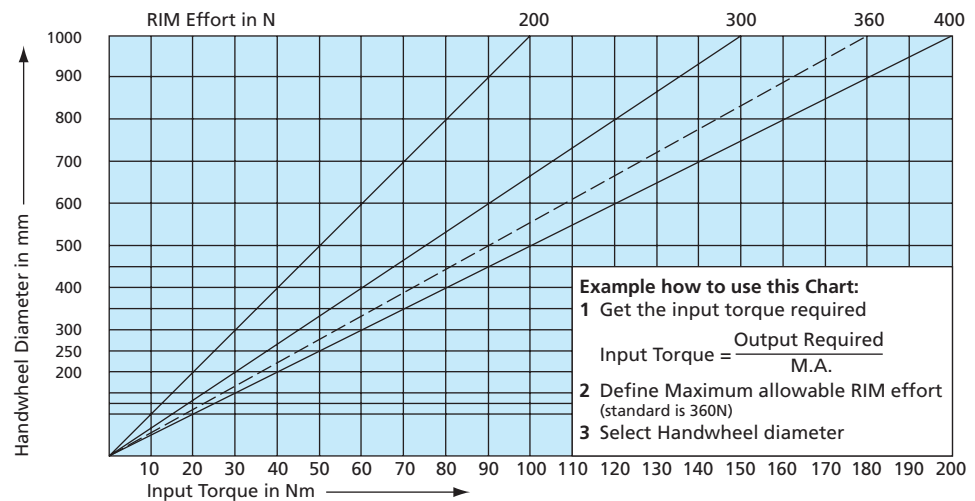
Dimensions

Type	øH	K	N
F200	200	75.5	3
F300	300	100.5	3
F400	400	100.5	4
F500	500	100.5	4
F600	600	100.5	4
F700	700	100.5	6
F800	800	100.5	6
F900	900	100.5	6
F1000	1000	100.5	6
F1100	1100	100.5	6
F1200	1200	100.5	8

Handwheel Selection Chart



'F' Type handwheel



Rotork Gears BV
Nijverheidstraat 25
7581 PV Losser
P.O. Box 98
7580 AB Losser
The Netherlands

tel: +31 (0)53 - 5388677
fax: +31 (0)53 - 5383939
email: info@rotorkgears.nl

Rotork Gears UK
Regina House
Ring Road
Bramley, Leeds
West Yorkshire LS13 4ET
England

tel: +44 (0)113 2057276
fax: +44 (0)113 2563556
email: sales@rotorkgears.co.uk

Rotork Valvekits
Brookside Way
Nunn Park
Huthwaite
Nottinghamshire NG17 2NL
England

tel: +44 (0)1623 440211
fax: +44 (0)1623 440214
email: sales@rotorkvalvekits.co.uk

Rotork Gears S.R.L.
via Olona, 65/67
20015 Parabiago (MI)
Italy

tel: +39 0331 552128
fax: +39 0331 553147
email: info@rotorkgears.it

Rotork Gears Shanghai
No. 260 Lian Cao Road
Xin Mei Urban Industrial Park
Min Hang District
Shang Hai 201108
China

tel: 0086-21-64348388
fax: 0086-21-64348366
email: info@rotorkgears.com.cn

A full listing of our worldwide sales and service network is available on our website at www.rotork.com

As part of a process of on-going product development, Rotork reserves the right to amend and change specifications without prior notice.

Published data may be subject to change.

For the very latest version release, visit our website at www.rotork.com

The name Rotork is a registered trademark. Rotork recognizes all registered trademarks. Published and produced in the UK by Rotork Controls Limited. POWSH1008